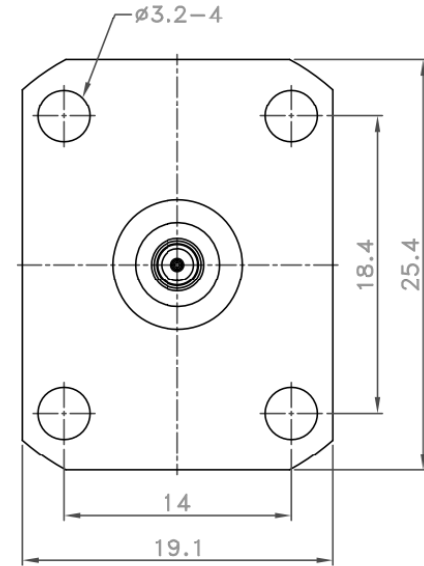
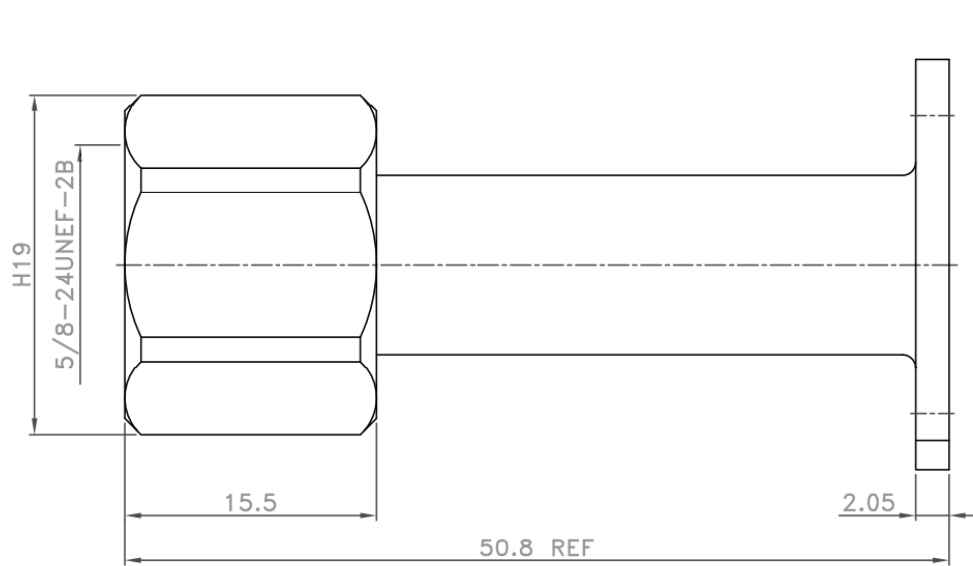


This document, including the design, configuration and mechanical features revealed herein are the sole, confidential and proprietary property of Winchester Interconnect. Reproduction or use thereof, in whole or part, is prohibited without the prior written consent of Winchester Interconnect.

REV	DESCRIPTION	DATE	APPROVED
01	PER EP-3204	07/26/23	FUH

NOTES:FINISH(PLATING THICKNESS IN MICRO-INCHES)
1.GOLD PL. 3 MIN. THICK OVER NICKEL PL. 50
MIN. THICK OVER COPPER 50 MIN. THICK





9	SHELL	1	SUS 303	PASSIVATED
8	GASKET	1	SI-RUBBER	ORANGE
7	RETAINING RING	1	BRASS	NONE
6	GROUNDING	1	BER. COPPER	NOTE 1
5	INSULATOR	1	PTFE	NATURAL
4	INSULATOR	1	PTFE	NATURAL
3	PIN	1	BER. COPPER	NOTE 1
2	PIN	1	PHOS. BRONZE	NOTE 1
1	BODY	1	SUS 303	PASSIVATED
NO	DESCRIPTION/DRAWING NO.	Q'TY	MATERIAL	FINISH

DMF029 C

CATALOG P/N: 52-939-3100-01



68 Water St.
Norwalk, CT 06854

DRAWN XXX	DATE XX/XX/XX	 Winchester Interconnect. TITLE: N PLUG TO SMP JACK ADAPTER		
APPR. XXX	DATE XX/XX/XX			
APPR. XXX	DATE XX/XX/XX			
APPR. XXX	DATE XX/XX/XX			
THIRD ANGLE PROJECTION 		SIZE A	DWG. NO. 52-939-3100-01C	REV 01
		SH 1 OF 1		

UNLESS OTHERWISE SPECIFIED:
DIMENSIONS ARE IN MM.

TOLERANCES:
0.5-6: ± 0.2
6-30: ± 0.4
30-120: ± 0.6
120-315: ± 1.0
ANGLES: $\pm 5^\circ$